



AL-REHMAN
— ENGINEERING —

COMPANY PROFILE



INTRODUCTION TO Al Rehman Engineering

Founded in 2015, Al-Rehman Engineering has earned a solid reputation as a frontrunner in engineering solutions and power optimization. Dedicated to excellence and customer satisfaction, we cater to a wide range of clients—from multinational corporations to individual consumers—by providing tailored services that address their specific needs and challenges.

Headquartered in Karachi, Pakistan, we have strategically positioned our technical and support teams in all major cities nationwide, ensuring comprehensive coverage and accessibility for our clients.

We are committed to maintaining the highest quality standards, striving not just to meet, but to surpass our clients' expectations. Our work ethic is founded on teamwork and ethical practices, cultivating an environment where team members combine their skills and efforts for continuous excellence.

At Al-Rehman Engineering, we are devoted to exceeding your expectations, and our steadfast integrity distinguishes us in the industry. Our committed team works diligently to provide the highest quality service, ensuring customer satisfaction at every stage.

Al-Rehman Engineering takes pride in providing exceptional performance, efficiency, and aesthetics in all our projects. We aim to be your trusted partner for engineering solutions, tackling your challenges with innovative and dependable services.



MISSION & VISION



OUR MISSION

Our mission is to thoroughly analyze problems and address them using the latest technology, equipment, and products available in our industry. We strive to provide a level of satisfaction that is unmatched in the field.



OUR VISION

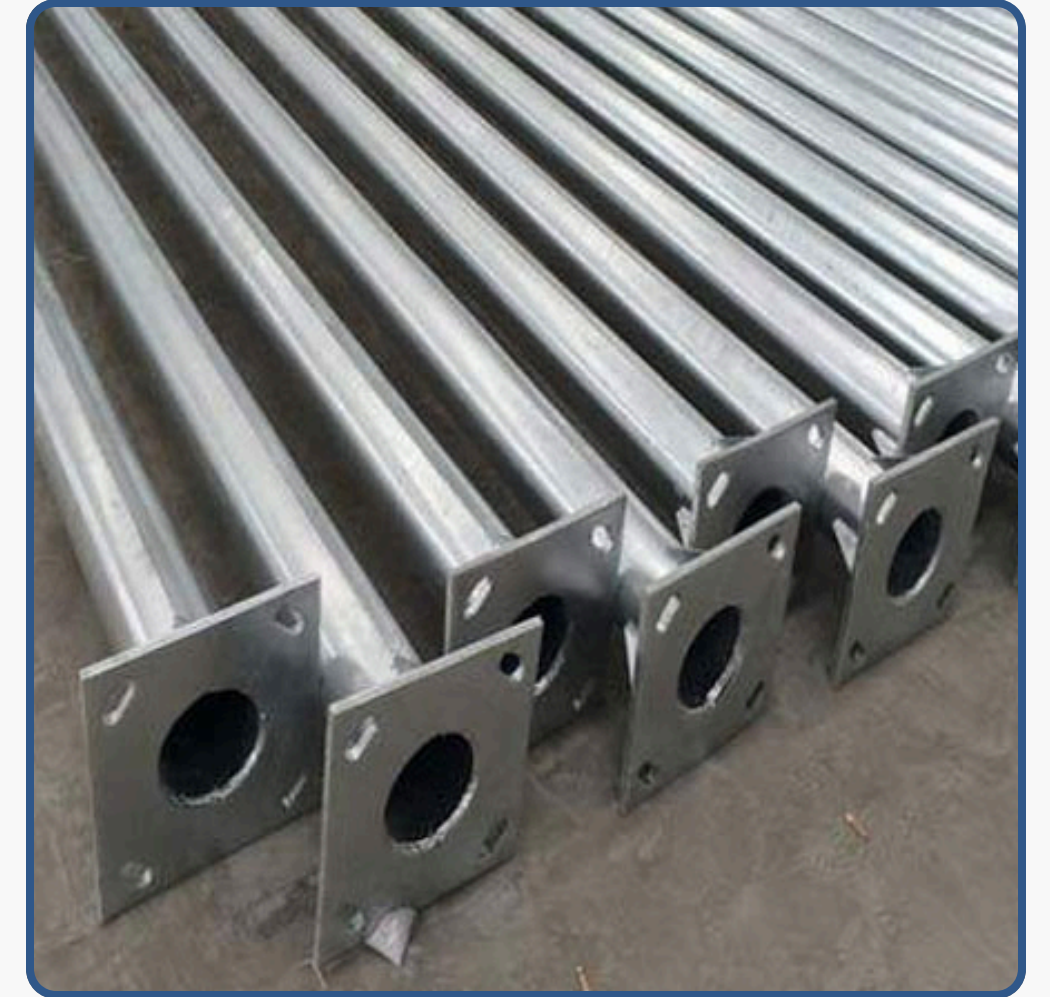
Our Vision is to establish ourselves as one of the leading service providers in the nation. We are dedicated to achieving excellence by delivering outstanding client support throughout our communities, ensuring timely responses and exceptional services across Pakistan.



MANUFACTURING SERVICES

Poles:

As a direct manufacturer of poles, Al-Rehman Engineering proudly provides a wide variety of pole categories designed to meet diverse applications and customer needs. With our specialized knowledge in pole production and dedication to customization, we deliver high-quality poles tailored to the unique requirements of our clients.



High Mast Poles:

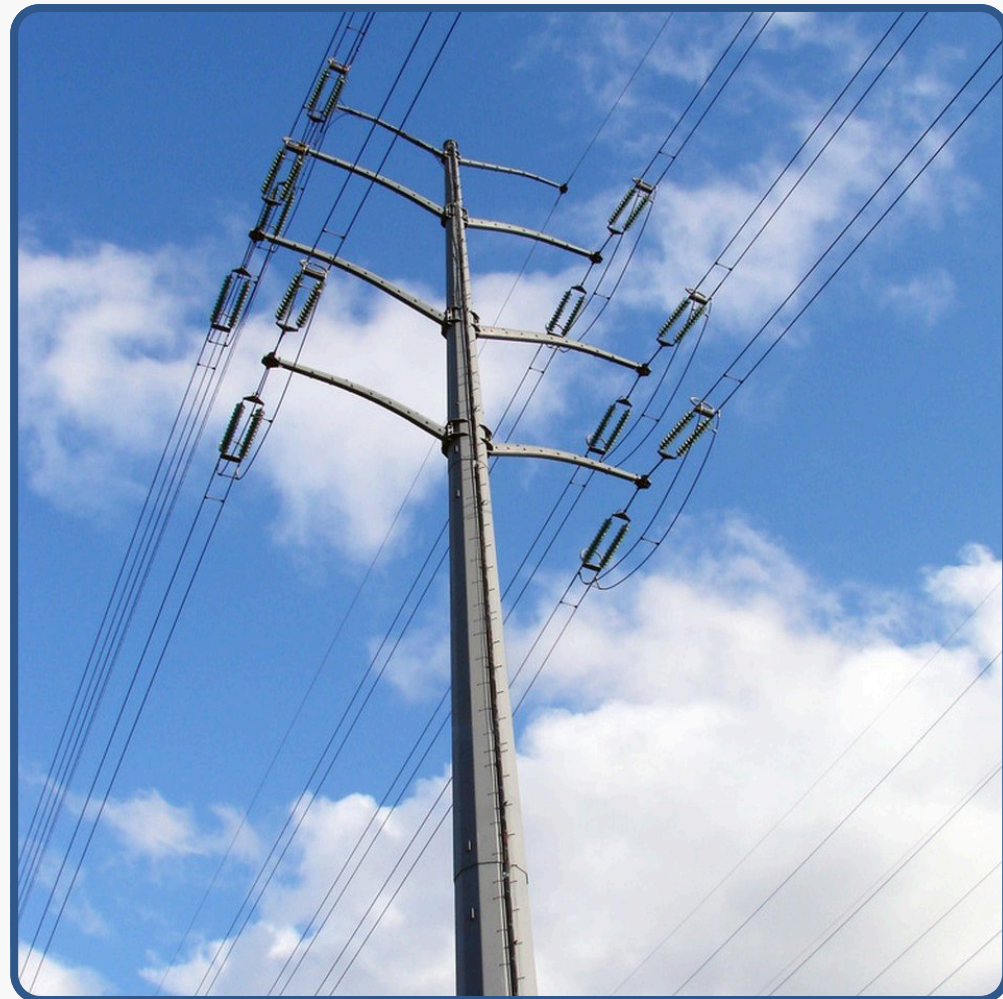
(Galvanized and Epoxy Paint)

Al-Rehman Engineering focuses on manufacturing high mast poles that offer efficient and effective lighting solutions for expansive areas. Our high mast poles come in various designs, such as octagonal and tabular, ensuring sturdy structures that can endure severe weather conditions while providing optimal illumination.

Lightning Poles:

(Galvanized and Epoxy Paint)

We produce lightning poles that emphasize safety and protection from lightning strikes. Our selection features tabular poles, conical octagonal poles, and conical round poles, all engineered to efficiently dissipate lightning energy while safeguarding nearby areas and structures. These lightning poles are crafted with durability in mind, ensuring they can endure environmental conditions and offer long-lasting support for lightning fixtures. Furthermore, we take into account design criteria to guarantee structural integrity, wind resistance, and visual appeal.



Electric Poles:

(Galvanized and Epoxy Paint)

Al-Rehman Engineering manufactures electric poles that are essential for electrical power distribution networks. Our poles are meticulously designed and constructed to adhere to industry standards, guaranteeing the reliable and efficient transmission of electricity.

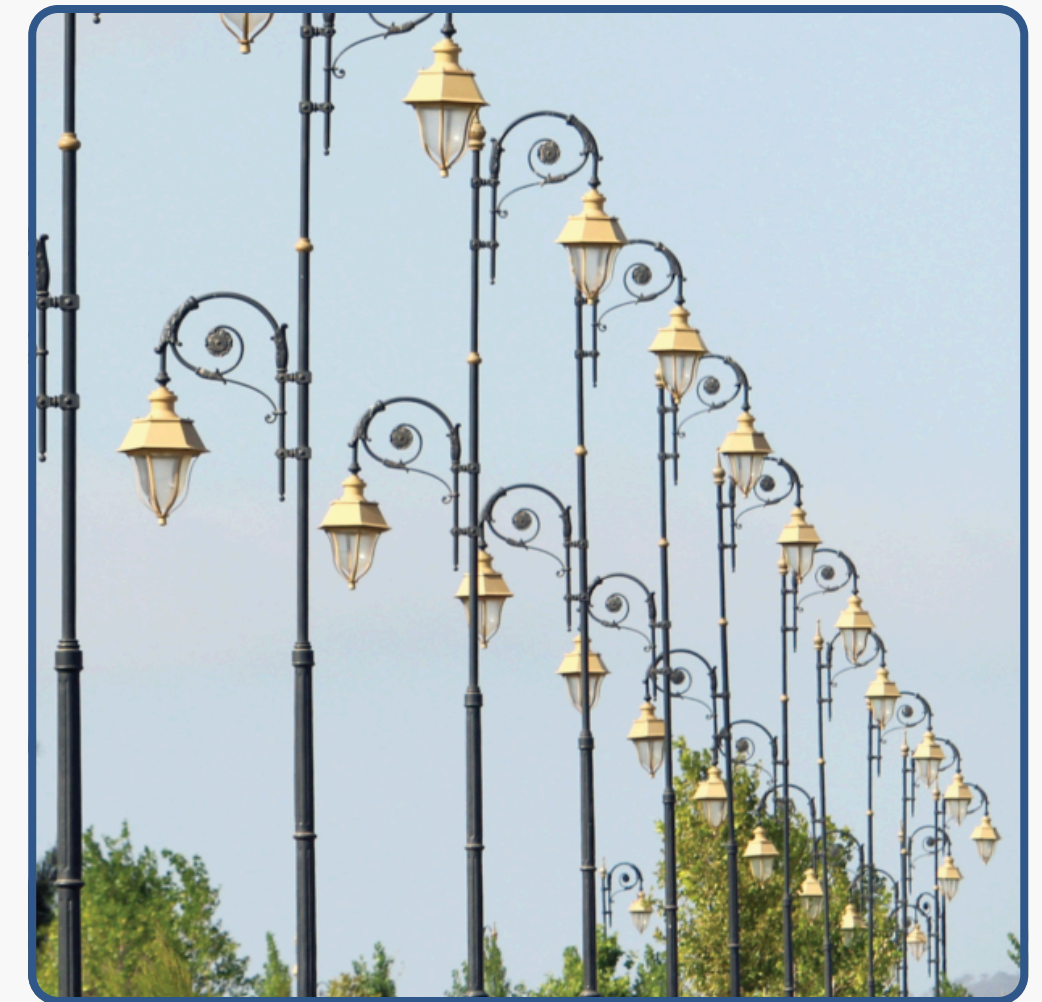
Fancy Poles / Decorative Poles:

(Galvanized and Epoxy Paint)

Enhancing Outdoor Spaces with Elegance and Style

Our exquisite decorative poles are carefully crafted with meticulous attention to detail, adding both elegance and aesthetic appeal to outdoor environments.

These poles elevate the visual charm of streets, parks, commercial complexes, and various public areas, showcasing our dedication to merging functionality with design.



Mobile Lightning Towers:

(Galvanized and Epoxy Paint)

In addition to our pole offerings, Al-Rehman Engineering offers mobile lightning towers that provide temporary lighting solutions for a variety of applications. These portable towers are crafted to deliver dependable and efficient illumination for events, construction sites, and outdoor activities, ensuring optimal visibility wherever it is required.

Structured Poles:

(Galvanized and Epoxy Paint)

Our structured poles are expertly crafted for specialized uses, delivering versatile support and stability for a range of installations. Engineered with precision and durability, these poles are designed to meet specific project requirements and adhere to industry standards. They provide excellent load-bearing capabilities and are perfect for applications that require enhanced structural integrity. Common uses include telecommunications, surveillance systems, and other setups where stability and reliability are essential.

Constructed from high-quality materials and utilizing advanced engineering techniques, our structured poles ensure durability and long-lasting performance. We offer a variety of designs to accommodate different project specifications, allowing for seamless integration and optimal functionality.

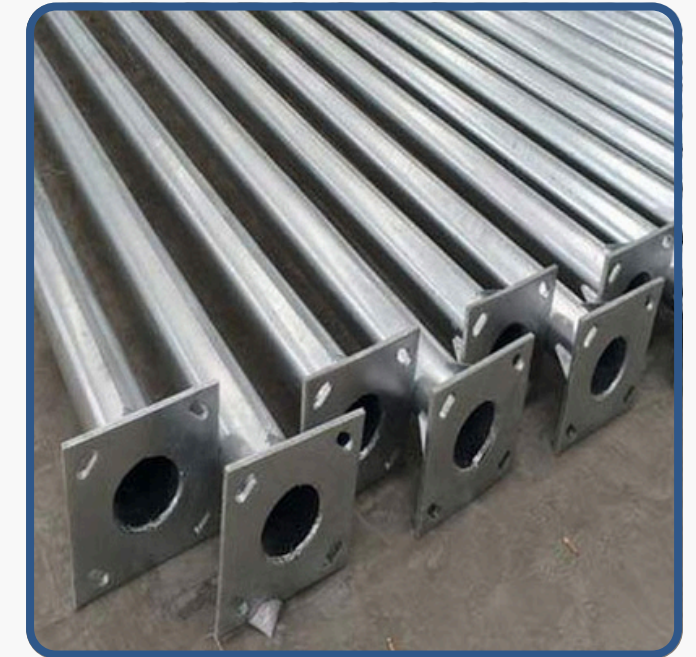
Whether you need support for telecom antennas, security cameras, or other specialized equipment, our structured poles provide the strength and stability necessary for your specific application. As with all our products, customization options are available to modify the design, dimensions, and specifications of structured poles to meet the unique needs of our clients.



CUSTOMIZATION

At Al-Rehman Engineering, we recognize that every project comes with its distinct requirements. That's why we provide customization options for our poles, enabling us to adjust the design, dimensions, and specifications to suit the particular needs of our clients. Our dedicated team collaborates closely with customers to fully understand their requirements, ensuring that the poles we manufacture align perfectly with their expectations and project objectives.

With our in-house manufacturing capabilities, a strong commitment to customization, and strict adherence to high-quality standards, Al-Rehman Engineering stands as your trusted partner for all your pole requirements. Whether you need high mast poles, lightning poles, electric poles, decorative poles, or mobile lightning towers, we offer durable, efficient, and bespoke solutions tailored to meet your specific project needs.



CABLE TRAYS:

(Perforated and Non- Perforated)

Al-Rehman Engineering provides an extensive selection of cable trays, featuring both perforated and non-perforated styles to cater to our customers' varied requirements. Our cable trays come in two favored finishes: galvanized and powder-coated, ensuring increased durability and protection for your cable management systems.

Galvanized Cable Trays:

We produce galvanized cable trays specifically engineered to endure harsh environmental conditions while providing long-lasting corrosion resistance. Each tray is treated with a galvanization process that applies a protective zinc coating to its surface, guaranteeing exceptional durability and an extended service life. These galvanized cable trays are especially ideal for outdoor installations and settings exposed to moisture, humidity, and corrosive elements, adhering to precise micron standards as needed.



Powder Coated Cable Trays:

Al-Rehman Engineering provides powder-coated cable trays that offer a robust and visually appealing solution for effective cable management. These trays are coated with a premium powder finish that not only improves their appearance but also adds an extra layer of protection against corrosion, scratches, and UV exposure. Powder-coated cable trays are ideal for indoor installations, commercial buildings, and locations where aesthetics and visual appeal are a priority.



LV SWITCHGEARS PANELS:

With our vast knowledge and expertise in both custom-built and standard LV switchgear panel construction, Al-Rehman Engineering stands out in designing and manufacturing LV Panels tailored to meet specific customer needs. Our product range features both wall-mounted and floor-standing switchboards, offering exceptional flexibility in designing and constructing distribution systems for diverse applications.

Our distribution panels are designed with a modular building block approach, creating an efficient and compact system that boasts a high stacking density, optimizing space usage. As your application's energy requirements change, this modular design allows for straightforward expansion and adjustments to the switchboard system.

At Al-Rehman Engineering, we recognize that each customer has distinct needs. That's why all our distribution panels are custom-designed to meet your specific requirements. We take into account various factors, including available space, cable entries, access to the switch room, and any other site-specific considerations, to guarantee optimal functionality and convenience.

LV SWITCHGEARS PANELS:

- Lightning Database / Power
- Power Factor Database (Improvement Panel)
- ATS Panel
- MCC Panel / ASD / DOL Starter Panel
- Synchronization Panels
- Bus-tie Duct
- Bus Coupler Panel
- Weatherproof Feeder Pillars
- LT Panel



TYPES OF LV SWITCHGEARS PANELS



SYNCHRONIZING PANEL



FEEDER PILLAR PANEL



BUS COUPLER PANEL



MAIN LT PANEL



MCC PANEL



ATS PANEL

TYPES OF MV & LV SWITCHGEARS PANELS



LT PANEL



DOL STARTER PANEL



**CONCEALED FLUSH
TYPE PANEL**



SURFACE TYPE DB



POWDER DB PANEL



MV SWITCHGEAR

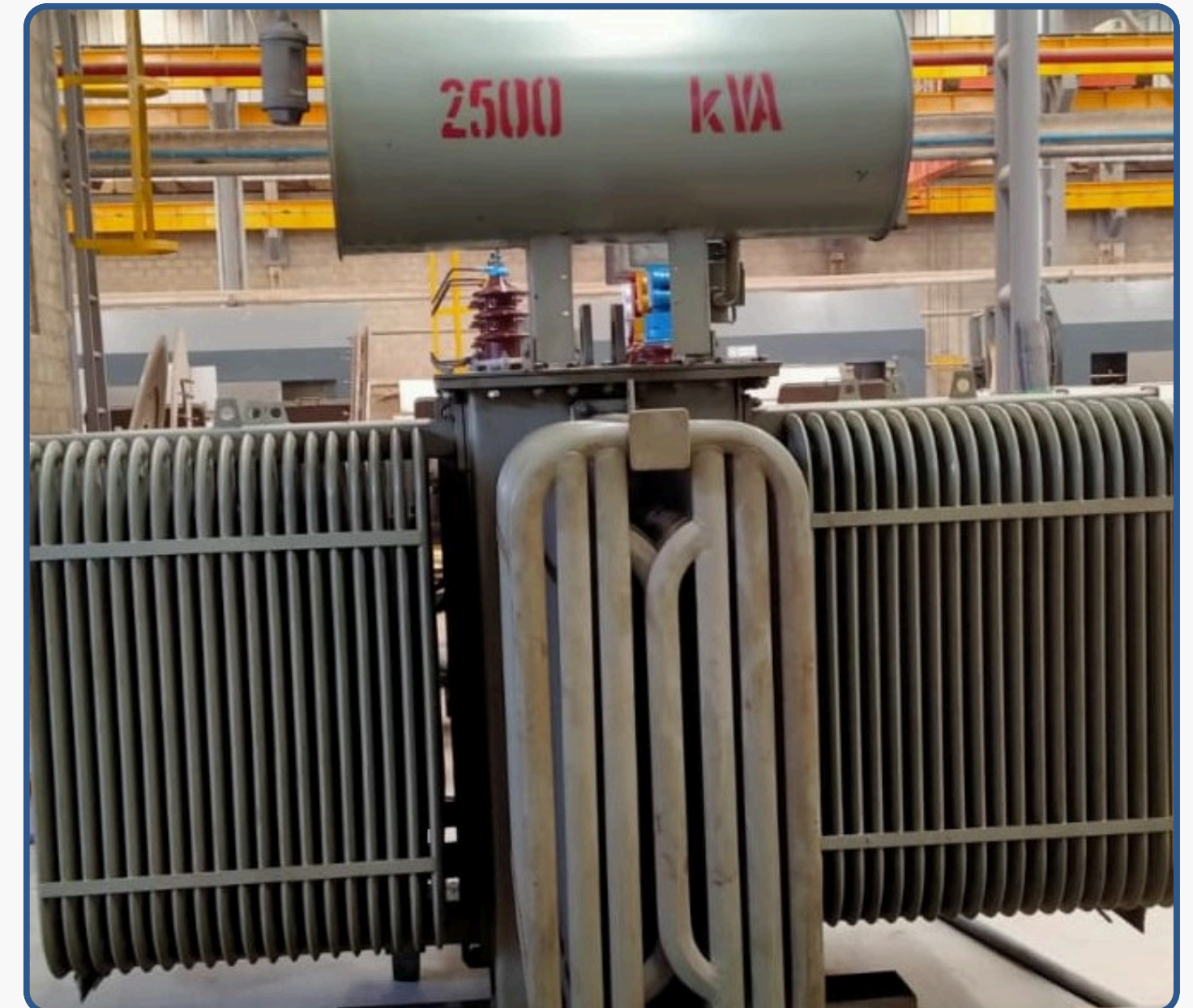
POWER TRANSFORMER – 2500 KVA

At Al-Rehman Engineering, we specialize in delivering high-performance power solutions tailored to meet the needs of modern industrial and commercial infrastructures. The 2500 kVA power transformer showcased here is a prime example of our commitment to quality, durability, and innovation.

KEY FEATURES:

- Rated Capacity: 2500 kVA
- Cooling Type: ONAN (Oil Natural Air Natural) – ensuring efficient thermal performance
- Robust Radiator Design: Engineered for optimal heat dissipation and extended service life
- High-Grade Core and Windings: Manufactured using top-quality materials to minimize losses and enhance efficiency
- Conservator Tank System: Maintains oil levels and prolongs transformer life
- Precision Manufacturing: Built with strict quality control in our advanced facility

Al-Rehman Engineering stands as a trusted name in the power sector, offering reliable and efficient transformer solutions that power progress across Pakistan and beyond.



CABLES & WIRES

(Building Wire, Low Voltage, Solar Cable, Earth & Conductor Etc.)

Premium-quality building wires designed for safe and efficient power distribution in residential and commercial applications. These wires offer excellent flexibility, high conductivity, and thermal resistance, making them suitable for indoor wiring and general electrical use.



Durable and efficient low voltage cables engineered for consistent power transmission in fixed installations. Featuring multi-core construction and superior insulation, these cables are ideal for industrial, infrastructure, and underground electrical systems.



AFTER SALES SERVICES:

Al-Rehman Engineering places great emphasis on providing comprehensive after-sales services to our customers. We believe that our responsibility does not end with the sale of our products; instead, we are committed to providing ongoing support and assistance.

Our dedicated team is available to address any inquiries, concerns, or technical issues that our customers may have. We offer prompt and efficient after-sales service, including technical support, troubleshooting, and maintenance assistance. We value long-term relationships with our customers and strive to be their reliable partner even after the sale is complete.



QUALITY STANDARDS:

Quality is the foundation of our operations at Al-Rehman Engineering. We are dedicated to upholding the highest quality standards in every facet of our business. From selecting raw materials to the manufacturing process and final product delivery, we implement rigorous quality control measures.

Our products are subject to thorough testing and inspections to guarantee that they meet or surpass industry standards. We consistently invest in cutting-edge technologies and equipment to improve our manufacturing processes and ensure exceptional quality. We take pride in the durability, reliability, and performance of our products, offering our customers peace of mind and confidence in their investment.

We are committed to ongoing enhancement and consistently evaluate our quality management systems to pinpoint opportunities for improvement. Our dedication to quality encompasses not only our products but also every interaction and service we offer, guaranteeing that our customers experience exceptional value and satisfaction.

At Al-Rehman Engineering, customer satisfaction, customization, after-sales services, and quality standards form the foundation of our business philosophy. We are committed to providing the best possible experience for our clients, ensuring that their needs are met and their expectations surpassed. Our focus is on excellence in every aspect of our operations.



CLIENTS



CUSTOMER SATISFACTION:

At Al-Rehman Engineering, customer satisfaction is central to our operations. We understand that our success is directly connected to the happiness of our valued clients, which is why we strive to exceed expectations by providing exceptional products and services. Our commitment to customer satisfaction drives us to go above and beyond in every aspect of our business.

We prioritize open communication with our clients, ensuring we actively listen to their needs, requirements, and feedback. By understanding their unique challenges and goals, we can tailor our solutions to meet their specific demands. We are dedicated to building strong and long-lasting relationships with our customers, based on trust, reliability, and mutual respect.



CONTACT DETAILS:



SM 8 Al Kamran Centre Nursury Shahrah e
Faisal Karachi.



+92 300 8286140



+92 336 3479927



+92 321 8404757



+92 319 8404757



www.alrehmaneng.com



noor@alrehmaneng.com



alrehmaneng@outlook.com



rizwan@alrehmaneng.com



rizwansuleman1968@gmail.com